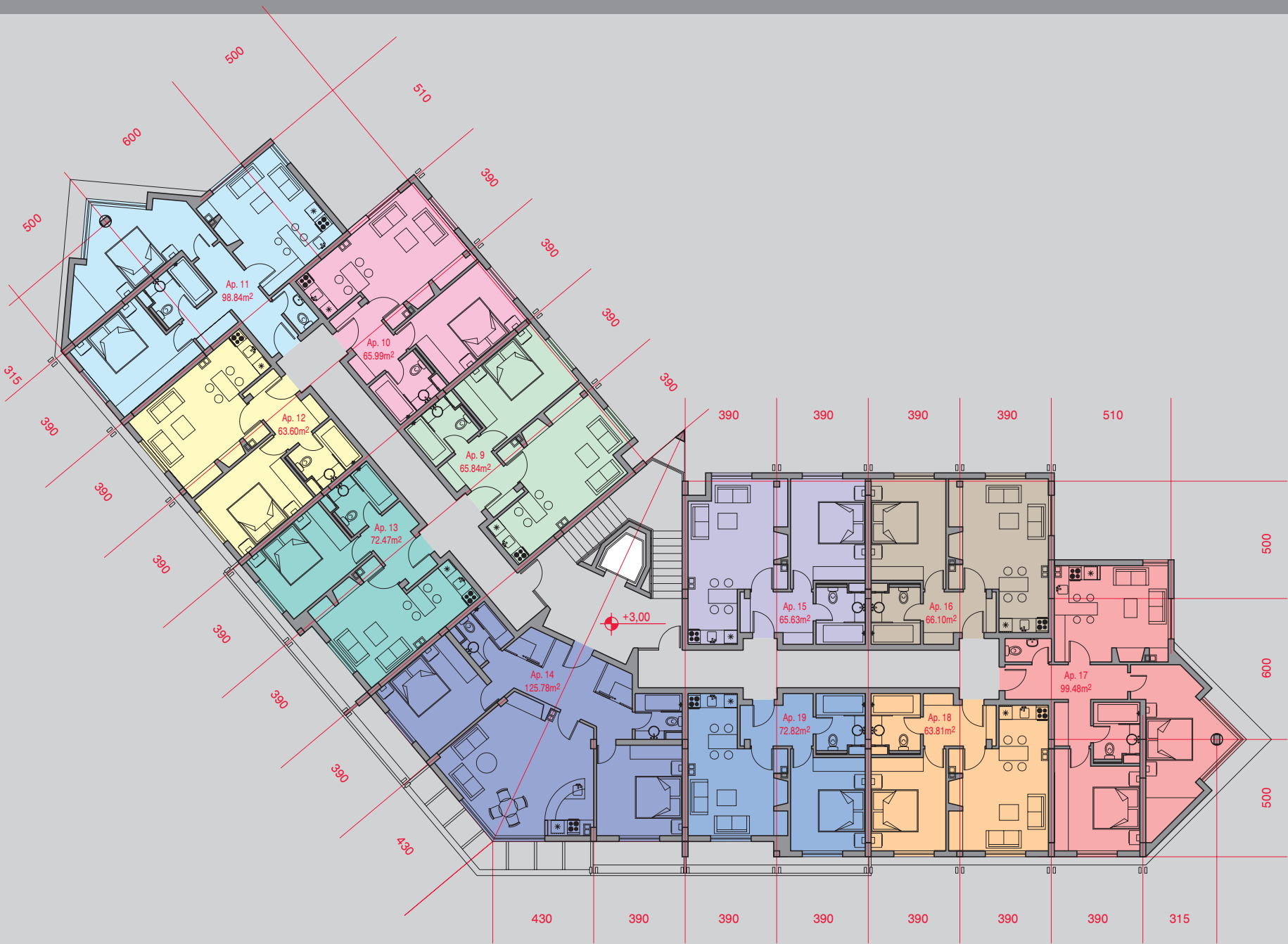
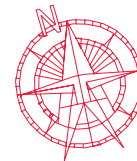


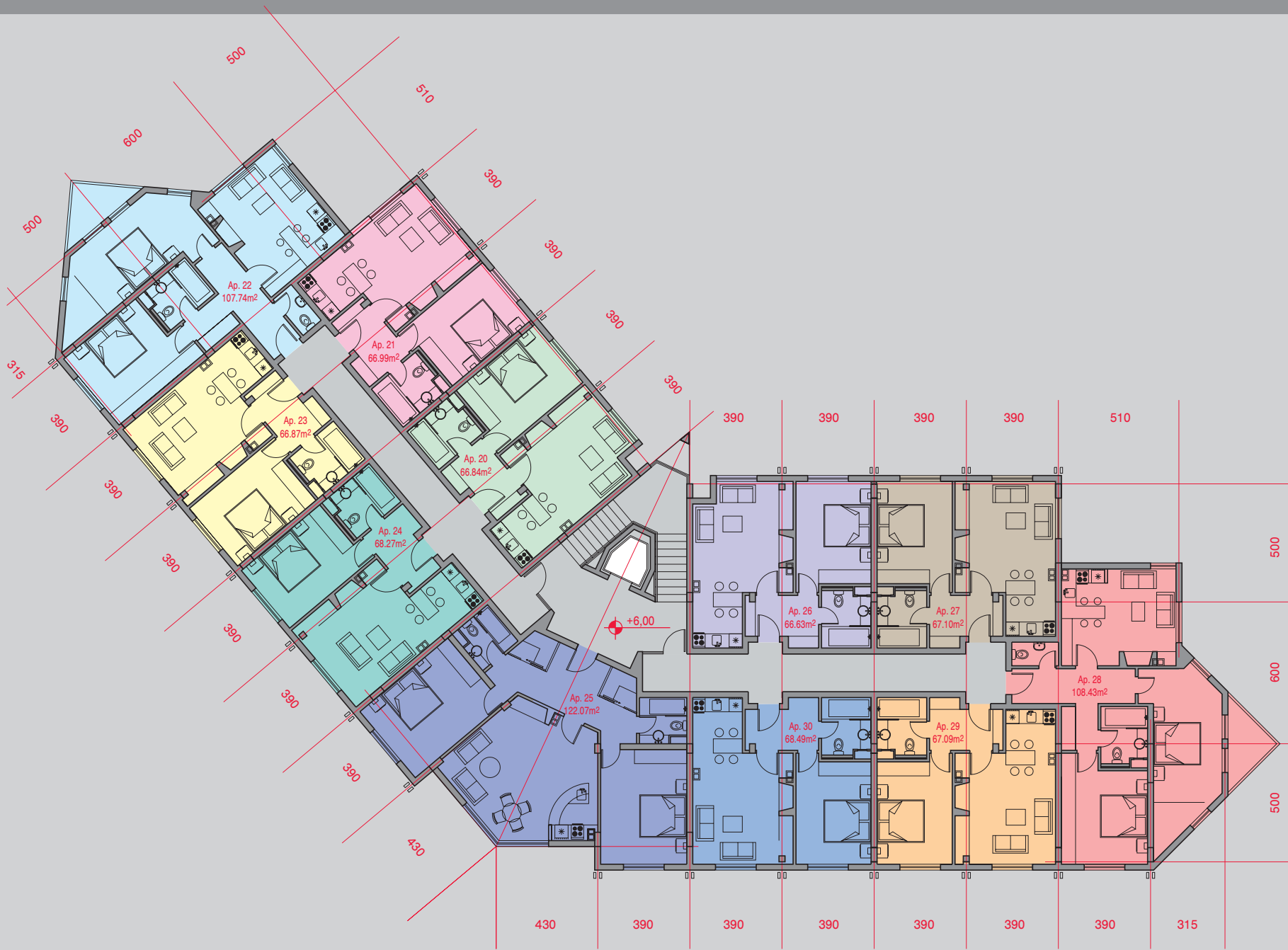
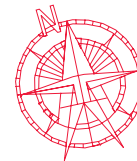
Main Floor  
Elevation +0,00

- Ap. 1 - 62.70 m<sup>2</sup>
- Ap. 2 - 62.57 m<sup>2</sup>
- Ap. 3 - 96.71 m<sup>2</sup>
- Ap. 4 - 62.30 m<sup>2</sup>
- Ap. 5 - 62.52 m<sup>2</sup>
- Ap. 6 - 62.66 m<sup>2</sup>
- Ap. 7 - 97.41 m<sup>2</sup>
- Ap. 8 - 62.48 m<sup>2</sup>
- Tea Room - 114.53 m<sup>2</sup>
- Shop 1 - 34.36 m<sup>2</sup>
- Shop 2 - 32.90 m<sup>2</sup>



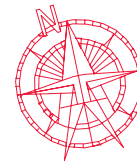
II-nd Floor  
Elevation +3,00

- Ap. 9 - 65.84 m<sup>2</sup>
- Ap. 10 - 65.99 m<sup>2</sup>
- Ap. 11 - 98.84 m<sup>2</sup>
- Ap. 12 - 63.60 m<sup>2</sup>
- Ap. 13 - 72.47 m<sup>2</sup>
- Ap. 14 - 125.78 m<sup>2</sup>
- Ap. 15 - 65.63 m<sup>2</sup>
- Ap. 16 - 66.10 m<sup>2</sup>
- Ap. 17 - 99.48 m<sup>2</sup>
- Ap. 18 - 63.81 m<sup>2</sup>
- Ap. 19 - 72.82 m<sup>2</sup>



III-th Floor  
Elevation +6,00

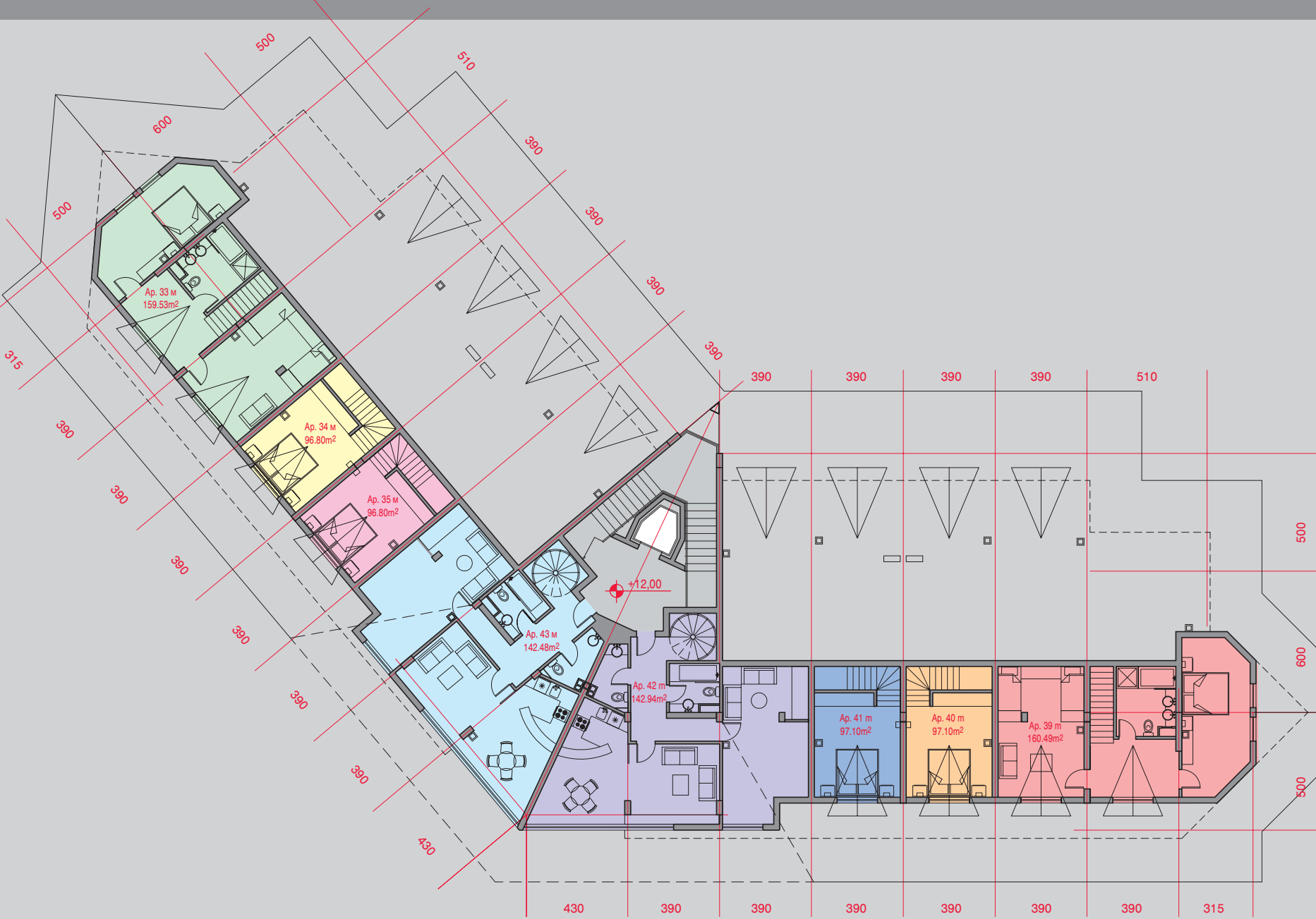
Ap. 20	- 66.84 m <sup>2</sup>
Ap. 21	- 66.99 m <sup>2</sup>
Ap. 22	- 107.74 m <sup>2</sup>
Ap. 23	- 66.87 m <sup>2</sup>
Ap. 24	- 68.27 m <sup>2</sup>
Ap. 25	- 122.07 m <sup>2</sup>
Ap. 26	- 66.63 m <sup>2</sup>
Ap. 27	- 67.10 m <sup>2</sup>
Ap. 28	- 108.43 m <sup>2</sup>
Ap. 29	- 67.09 m <sup>2</sup>
Ap. 30	- 68.49 m <sup>2</sup>



IV-th Floor  
Elevation +9,00

- Ap. 31 - 53.60 m<sup>2</sup>
- Ap. 32 - 80.25 m<sup>2</sup>
- Ap. 33 m\* - 159.53 m<sup>2</sup>
- Ap. 34 m\* - 96.80 m<sup>2</sup>
- Ap. 35 m\* - 96.80 m<sup>2</sup>
- Ap. 36 - 122.07 m<sup>2</sup>
- Ap. 37 - 53.45 m<sup>2</sup>
- Ap. 38 - 80.48 m<sup>2</sup>
- Ap. 39 m\* - 160.49 m<sup>2</sup>
- Ap. 40 m\* - 97.10 m<sup>2</sup>
- Ap. 41 m\* - 97.10 m<sup>2</sup>

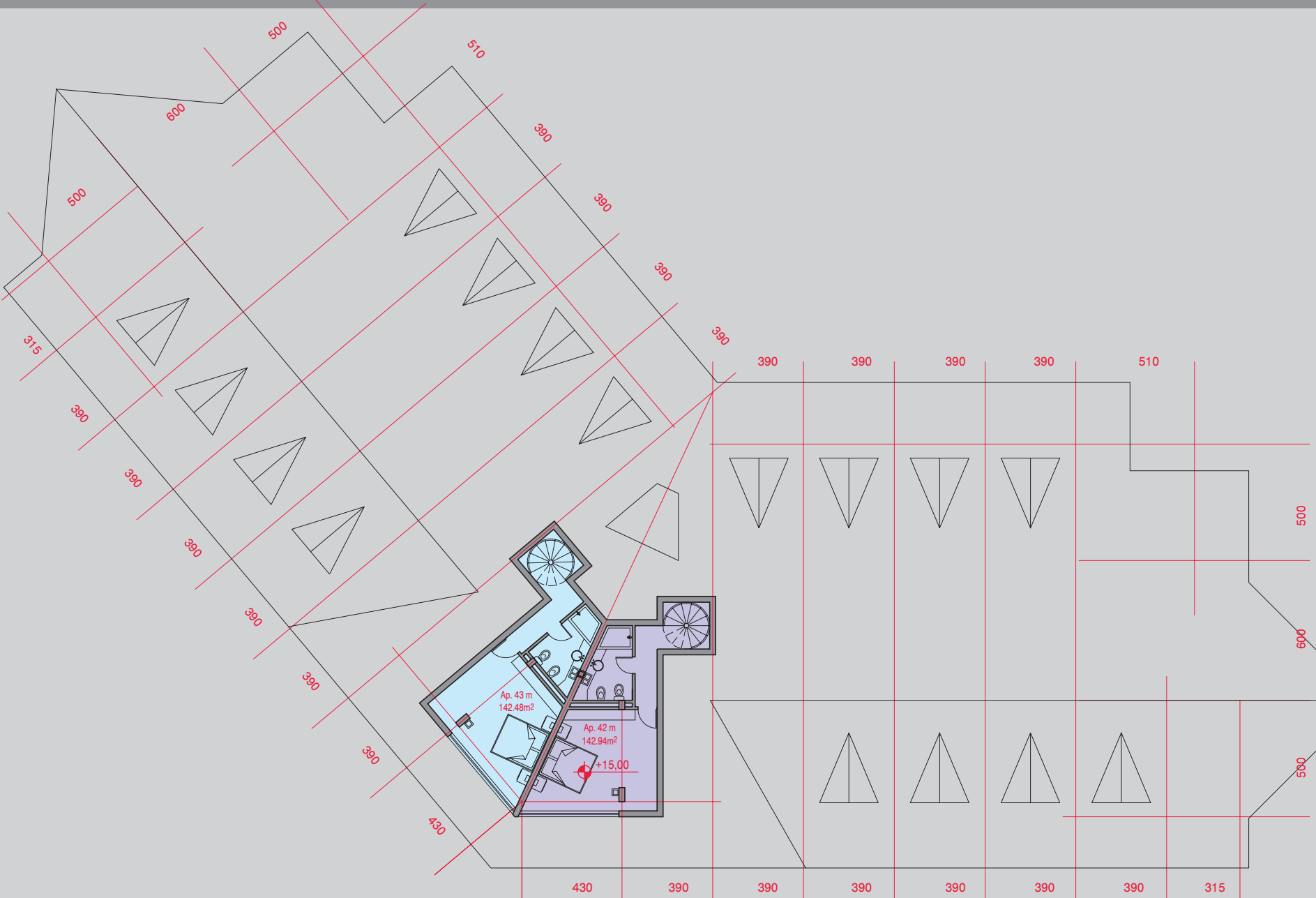
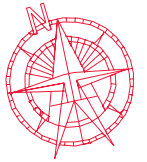
\*m - maisonette



Top Floor  
Elevation +12,00

- Ap. 33 m\* - 159.53 m<sup>2</sup>
- Ap. 34 m\* - 96.80 m<sup>2</sup>
- Ap. 35 m\* - 96.80 m<sup>2</sup>
- Ap. 39 m\* - 160.49 m<sup>2</sup>
- Ap. 40 m\* - 97.10 m<sup>2</sup>
- Ap. 41 m\* - 97.10 m<sup>2</sup>
- Ap. 42 m\* - 142.94 m<sup>2</sup>
- Ap. 43 m\* - 142.48 m<sup>2</sup>

\*m - maisonnete



Elevation +15,00

Ap. 42 m\* - 142.94 m<sup>2</sup>

Ap. 43 m\* - 142.48 m<sup>2</sup>

\*m - maisonette

## TECHNOLOGY AND STAGES OF IMPLEMENTATION AND COMPLETION OF "APARTMENT COMPLEX" - PAMPOROVO

### SCHEDULE

The projected residential building consists of apartments, studios and maisonnettes for all-year round occupation, offering opportunities for their owners to sell or lease these properties to touroperators for tourist services realization. Because of its specific characteristics, the building provides additional service facilities - exterior and interior - typical for a mountain hotel: Reception Desk, Tea-room, Ski cloakroom, Shops, Security, All-year round maintenance and cleaning of the common areas as well as the infrastructure around the building.

**Rough construction** - the building framework is of monolith type, reinforced, ferro-concrete with full thermo insulation - "Baumit". The roof is a ferro-concrete slab with thermo insulation and tiles.

**Walls** - brick 25/12 cm, covering of all external walls with extruded polystyrol - for plasters and facings, and rock-wool for wood siding,

**Exterior plaster** - mineral, stone facing - finished split stone, bordering - pine and mordant.

**Parapets** - wooden, with metal framework

**Framing** - PVC - 5 chamber with veneer imitation, white glass package.

**Pavements** - split stone /as facing/

**Loading platform** - stamped concrete

**Fence** - wooden, disassembleable with solid plinth - 10 cm, staircases and corridors - embossed granitogres - 10 cm plinth

**Apartments** - granitogres, faience, parquet floors

**Bathrooms** - without construction lowering, threshold, siphon

**Garages and technical premises** - smooth cement coating

**Ceiling** - foyer - gypsum board, wood - combined illumination, staircases and corridors - gypsum board

**Chimneys** - Concrete siphon body

**Lift** - capacity 6 persons / 500 kg - hydraulic

**Doors** - exterior to the framing, interior - round edges MDF - 70.80.90 cm according to the purpose; technical premises - metal doors;

**Garage entrance** - roller door

**Installations** - the following installations are projected: Wiring for electricity, Telephone, Fire-alarm installation, Grounding, Lighting prevention system, Intercom door entry system, TV /satellite/

**Heating** - the following specifications are set for the apartments and common areas:

- Individual electric panel for all premises
- Individual water heating installation per apartment with horizontal distribution and compulsory installation /upon request/

**Remark:** Upon property transfer, the sides shall agree the terms and conditions of subscription services /security and maintenance/ for the common areas of the complex